

West Shore Lake Pontchartrain

Stakeholder Update

June 30, 2021

Bradley Drouant, PE, PMP
Sr. Project Manager
New Orleans District
U.S. Army Corps of Engineers



®

US Army Corps of Engineers
BUILDING STRONG®



Agenda

- General Status
- Borrow
- Right-of-Entry
- St. James Parish Update

General Status

- St James Parish – PM, ED, and Environmental conducted a site visit with Parish President Dufresne on 28 Jun 21.
- Levee construction reaches have been optimized to maximize construction access (shown on following page)
 - ▶ Currently have 13 levee contracts and 1 pump station contract
- Design Optimization Efforts
 - ▶ These efforts include:
 - Reviewing geotechnical parameters that impact the cross section of the levee, CPRA and USACE are close to finalizing this information that will be used going forward
 - Initial pump alternatives have been run in HEC-RAS, and have been sent to Stantec for quality control reviews
 - ADCIRC model runs to confirm levee design heights are expected to be complete mid-July
- What isn't being changed in this effort?
 - Level of risk reduction provided from hurricanes remains 100 yr or 1%
- Clay Stockpile contract 1 has begun hauling material approximately 10,000 cy have been placed along access road J, Clay stockpile contract 2 continues to stockpile material in the spillway, Sand Stockpile has also hauled 10,000 cy to access road J.
- Access Road J Extension to Test Section WSLP-101 - We have awarded the mod to extend this road and work is underway, expected to reach the pipeline corridor end of July.

General Status (cont.)

- WSLP-101:
 - ▶ The formal request for proposal has been sent to the contractor was due May 19, extended following the response to CT questions . This is not expected to delay initiation of work as access road J extension is still required.

- Remaining Access Roads:
 - ▶ Advertised 4 June 21, expecting to issue an amendment next week that will result in a two week extension with bids now expected 18 Jul 21 pending receipt of Right of Way/Air Liquide LONO.
 - ▶ Looking to award contract with remaining access roads in early July with Road A, B, C in base contract and S,D,F, & G as options.

- Tree/Clearing Pre-Loading contracts
 - ▶ Depending on the outcome of the optimization efforts, if levee re-designs are required we may move forward with additional contracts to prepare the alignment and perform preparatory work to continue to move the project forward

- Pile Load Test
 - ▶ BCOE review underway, cannot be finalized until ADCIRC runs are complete

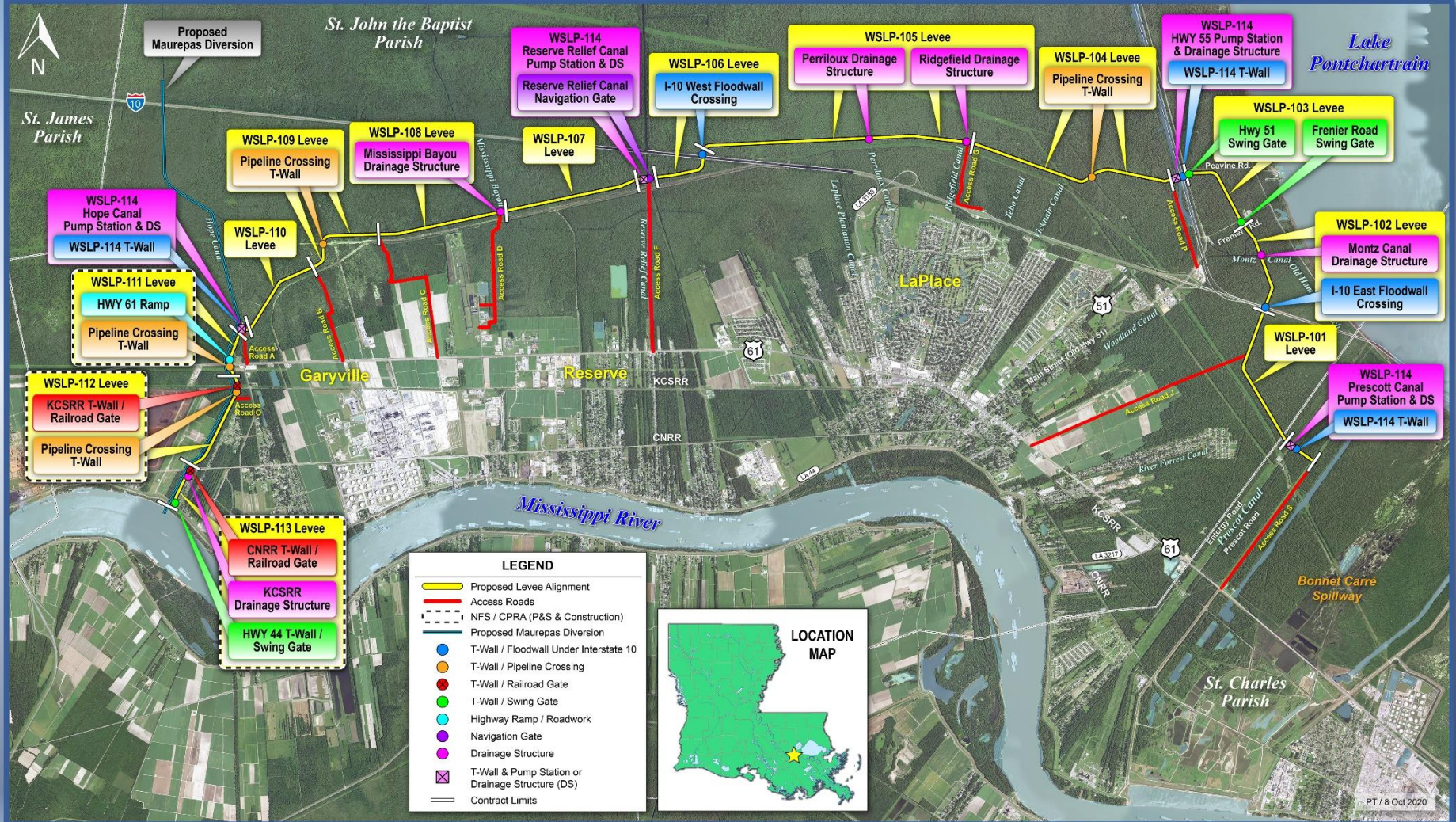
- Right of Entry
 - ▶ PLD has appropriated much of the alignment
 - ▶ CPRA still working on final LONO across the utility corridor from Air Liquide

Levee Borrow Requirements

- Currently estimating a need of about 7.0M – 9.0M cubic yards of levee material for construction
- Bonnet Carre' Spillway (BCS)
 - ▶ BCS currently has 3.5M CY readily available
 - ▶ Access issues due to high stages on Mississippi River
- Will continue to pursue additional Government Furnished borrow
- Contractor Furnished Borrow List used for levee construction in New Orleans not authorized to be used for the WSLP project
- WSLP approved to use commercially available borrow sources
 - ▶ Sources Sought issued to identify commercial borrow sources
 - ▶ Requirements to become a commercial borrow source were included in the Sources Sought solicitation
 - ▶ Sources Sought closed 5 Nov 2020. Comments provided to all applicants
 - ▶ 5 pits have been pre-qualified for inclusion on the list
 - ▶ No additional pits expected to be qualified in the near-term



West Shore Lake Pontchartrain





WSLP - St James Parish



Questions